

COMPONENTS AND ACCESSORIES

ECON-O-FIT™ HOSE CLAMPS

ECON-O-FIT™ is the original anodized aluminum hose clamp cover. Its appearance dresses up any installation. ECON-O-FIT's specially designed interior grooving prevents the hose from "hanging up" on the clamp and ensures proper placement of the worm gear type clamp with respect to the end of the hose. ECON-O-FITs are machined from aluminum alloy and are available in red, blue, chrome and black.

Body is hexagonal on sizes 3 through size 16.

Body is round on sizes 18 through 36.



NEW!

ECON-O-FIT SIZE	ECON-O-FIT I.D.	FITS STAINLESS HOSE SIZE	HOSE O.D.	TYPICAL APPLICATION	PART NO. RED	PART NO. BLUE	PART NO. CHROME	PART NO. BLACK
3	7/16"	4 or 5	3/8"	Vacuum Line	900103ERL	900203ERL	900303ERL	N/A
4	1/2"	4 or 5	7/16" – 1/2"	Fuel Lines – Vacuum Lines	900104ERL	900204ERL	900304ERL	900504ERL
5	35/64"	4 or 5	1/2"	Fuel Lines	900105ERL	900205ERL	900305ERL	900505ERL
6	5/8"	6	35/64"	Fuel Lines – Oil Lines	900106ERL	900206ERL	900306ERL	900506ERL
7	21/32"	7	5/8"	Fuel Lines – Oil Lines	900107ERL	900207ERL	900307ERL	900507ERL
8	11/16"	7 or 8	5/8" – 41/64"	Vent Lines – Oil Cooler Lines	900108ERL	900208ERL	900308ERL	900508ERL
10	13/16"	10	51/64"	Oil Cooler Lines – Heater Hoses	900110ERL	900210ERL	900310ERL	900510ERL
12	15/16"	12	15/16"	Heater Hoses	900112ERL	900212ERL	900312ERL	900512ERL
14	1 – 1/8"	12 or 14	15/16" – 1-1/32"	Heater Hoses	900114ERL	900214ERL	900314ERL	900514ERL
16	1 – 3/16"	16	1-5/32"	Heater – Radiator Hoses	900116ERL	900216ERL	900316ERL	900516ERL
18	1 – 3/8"	16 or 18	1-5/32" – 1-5/16"	Heater – Radiator Hoses	900118ERL	900218ERL	900318ERL	N/A
20	1 – 1/2"	20	1-7/16"	Heater – Radiator Hoses	900120ERL	900220ERL	900320ERL	N/A
24	1 – 3/4"	24	1-45/64"	Radiator Hoses	900124ERL	900224ERL	900324ERL	N/A
28	1 – 15/16"	28	1-27/32"	Radiator Hoses	900128ERL	900228ERL	900328ERL	N/A
32	2 – 3/16"	32	2-1/8"	Radiator Hoses	900132ERL	900232ERL	900332ERL	N/A
34	2 – 5/16"	**	**	Radiator Hoses	900134ERL	900234ERL	900334ERL	N/A
36	2 – 3/8"	**	**	Radiator Hoses	900136ERL	900236ERL	900336ERL	N/A

** No stainless braided hose this size. Intended for use with TUBE BRAID over existing radiator hose.
ECON-O-FIT HOSE ENDS ARE COVERED BY U.S. PATENTS NO 4135744-DES 251676 AND 251918

STAINLESS STEEL HOSE CLAMPS

Despite our best efforts, there are still places where it makes sense to use an old fashioned hose clamp.



PKG. PART NO.	PKG. QTY.	I.D. MIN.	I.D. MAX.
174002ERL	4	.219	.625
174003ERL	4	.375	.875
174004ERL	4	.500	1.250
174005ERL	4	.500	1.500
174006ERL	4	.500	1.750
174008ERL	4	.750	2.500

HOSE AND TUBING ACCESSORIES

COMPONENTS AND ACCESSORIES

HOSE & TUBING SEPARATORS

Crafted from 6061-T6 billet aluminum alloy these clamps are the finest available to finish off a professional plumbing installation. Clamps come with counter sunk allen head screws in a variety of colors and sizes for separating, isolating and securing fuel, oil and brake lines.



SIZE	RED ANODIZED	BLUE ANODIZED	POLISHED	QTY. PER PKG.	PERFORM-O-FLEX™ AUTO-FLEX™ PRO-LITE 350™	SPEED-FLEX™	SUPER STOCK™
3/16	167003ERL	167103ERL	167203ERL	3	—	—	—
1/4	167004ERL	167104ERL	167204ERL	3	—	-3	—
5/16	167005ERL	167105ERL	167205ERL	3	—	-4	—
3/8	167006ERL	167106ERL	167206ERL	2	-3	—	—
7/16	167007ERL	167107ERL	167207ERL	2	-4	-6	—
1/2	167008ERL	167108ERL	167208ERL	2	-5	—	-4
9/16	167009ERL	167109ERL	167209ERL	2	-6	-8	—
5/8	167010ERL	167110ERL	167210ERL	2	—	—	-6
11/16	167011ERL	167111ERL	167211ERL	2	-9	—	—
3/4	167012ERL	167112ERL	167212ERL	2	—	—	-8
13/16	167013ERL	167113ERL	167213ERL	2	-10	—	—
7/8	167014ERL	167114ERL	167214ERL	2	-11	—	—
15/16	167015ERL	167115ERL	167215ERL	2	-12	—	-10
1	167016ERL	167116ERL	167216ERL	2	—	—	—
1-1/16	167017ERL	167117ERL	167217ERL	2	-14	—	-12
17/32	167019ERL	167119ERL	167219ERL	2	—	—	—
19/32	167020ERL	167120ERL	167220ERL	2	-7	—	—
21/32	167022ERL	167122ERL	167222ERL	2	-8	—	—

LINE CLAMPS



CLAMP I.D. SIZE	RED ANODIZED	BLUE ANODIZED	POLISHED	QTY. PER PKG.	PERFORM-O-FLEX™ AUTO-FLEX™ PRO-LITE 350™	SPEED-FLEX™	SUPER STOCK™
3/16	170003ERL	170103ERL	170203ERL	6	—	—	—
1/4	170004ERL	170104ERL	170204ERL	6	—	-3	—
5/16	170005ERL	170105ERL	170205ERL	6	—	-4	—
3/8	170006ERL	170106ERL	170206ERL	4	-3	—	—
7/16	170007ERL	170107ERL	170207ERL	4	-4	-6	—
1/2	170008ERL	170108ERL	170208ERL	3	-5	—	-4
9/16	170009ERL	170109ERL	170209ERL	3	-6	-8	—



To determine which separator or clamp will fit your hose, measure the outside diameter of your hose and check the corresponding inside size of the separator or clamp and choose the closest one.

CLAMPS, WASHERS & SEALS

COMPONENTS AND ACCESSORIES

CUSHIONED TUBING CLAMPS

These clamps are designed to support and locate hoses. They are attached to the supporting structure either with a machine screw and nut or, in blind applications, with a machine screw and a rivet or plate nut.



PKG. PART # ALUM. FINISH	PKG. PART # RED ANODIZED	PKG. PART # BLUE ANODIZED	FITS TUBE OR HOSE O.D.	PKG. QTY.
171003ERL	171103ERL	171203ERL	3/16"	10
171004ERL	171104ERL	171204ERL	1/4"	10
171005ERL	171105ERL	171205ERL	5/16"	10
171006ERL	171106ERL	171206ERL	3/8"	10
171008ERL	171108ERL	171208ERL	1/2"	5
171010ERL	171110ERL	171210ERL	5/8"	5
171012ERL	171112ERL	171212ERL	3/4"	5
171016ERL	171116ERL	171216ERL	1"	5
171018ERL	171118ERL	171218ERL	1-1/8"	2
171020ERL	171120ERL	171220ERL	1-1/4"	2
171024ERL	171124ERL	171224ERL	1-1/2"	2
171028ERL	171128ERL	171228ERL	1-3/4"	2
171030ERL	171130ERL	171230ERL	1-7/8"	2
171032ERL	171132ERL	171232ERL	2"	2

AN 901 ALUMINUM CRUSH WASHERS

To be used with straight threaded adapter fittings when sealing at a port which has no relief for an "O" ring.

PKG. PART NO.	PKG. QTY.	FTG. SIZE	I.D.
177003ERL	10	3	3/8"
177004ERL	10	4	7/16"
177005ERL	10	5	1/2"
177006ERL	10	6	9/16"
177008ERL	5	8	3/4"
177010ERL	5	10	7/8"
177012ERL	5	12	1-1/16"
177016ERL	2	16	1-5/16"
177100ERL	10	10mm	10mm



COPPER

PKG. PART NO.	PKG. QTY.	FTG. SIZE	I.D.
177101ERL	10	10mm	10mm
177102ERL	10	4	7/16"



STAT-O-SEALS

The Stat-O-Seal consists of a synthetic rubber "O" ring mechanically locked to the I.D. of an aluminum washer. When tightened the "O" ring is compressed, forcing the sealing surfaces around the bolt shank. They will form a positive seal over a temperature range of -85° to +450° F.



PART NO.	PKG. QTY.	I.D.	FITS AN FITTING
178003ERL	2	3/16"	—
178004ERL	2	1/4"	—
178005ERL	2	5/16"	—
178006ERL	2	3/8"	3
178007ERL	2	7/16"	4
178008ERL	2	1/2"	5
178009ERL	2	9/16"	6
178010ERL	2	5/8"	—
178012ERL	2	3/4"	8
178014ERL	2	7/8"	10

DOWTY SEALS

Dowty seals are similar in concept to our Stat-O-Seals, but are considerably smaller in diameter (and thicker in cross section).



PART NO.	PKG. QTY.	I.D.	FITS AN FITTING
178103ERL	2	3/16"	—
178104ERL	2	1/4"	—
178105ERL	2	5/16"	—
178106ERL	2	3/8"	3
178107ERL	2	7/16"	4
178108ERL	2	1/2"	5
178109ERL	2	9/16"	6
178110ERL	2	5/8"	—
178112ERL	2	3/4"	8
178114ERL	2	7/8"	10
178117ERL	2	1-1/16"	12

"O" RINGS

EARL'S STOCKS "O" ring seals in both the traditional BUNA N synthetic rubber and in VITON®. The BUNA compound is compatible with most fuels, hydraulic fluids and lubricants up to a temperature limit of 275° F. VITON® is preferred for synthetic lubricants, oxygen bearing fuels and additives and non-ether based brake fluids. VITON® also has more scuff resistance, a longer service life and a higher temperature rating of 400° F.

Viton® is a registered trademark of DuPont Performance Elastomers



Viton®

PKG. PART NO.	PKG. QTY.	FTG. SIZE
176103ERL	10	3
176104ERL	10	4
176106ERL	10	6
176108ERL	10	8
176110ERL	5	10
176112ERL	5	12
176116ERL	5	16

Buna N®

PKG. PART NO.	PKG. QTY.	FTG. SIZE
176003ERL	10	3
176004ERL	10	4
176006ERL	10	6
176008ERL	10	8
176010ERL	5	10
176012ERL	5	12
176016ERL	5	16

CONICAL SEALS

IMMEDIATE AND PERMANENT field repairs for damaged hose end and 37° adapter fitting cones and seats.

Easily installed by simply pushing over the male cone and assembling the hose end in the normal manner.

PART NO.	DESCRIPTION
169101ERL	Conical Seal Assortment, contains 4 of each of the following sizes: -3, -4, -6, -8, -10, -12, -16
169103ERL	package of 4, size -3
169104ERL	package of 4, size -4
169106ERL	package of 4, size -6
169108ERL	package of 4, size -8
169110ERL	package of 4, size -10
169212ERL	package of 2, size -12
169216ERL	package of 2, size -16



TEFLON® TAPE

EVERY TIME you install a tapered pipe threaded fitting it is essential to use some form of anti-seize to prevent galling. Our teflon tape is not only the easiest and least messy form of anti-seize available, it also forms a positive seal.

PKG. PART NO.	DESCRIPTION
175002ERL	1/2x520"



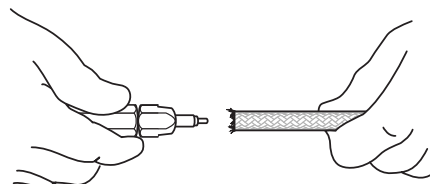
EARL'S BRAID SPREADER FOR -3 AND -4 TEFLON HOSE

IN ORDER to insert the "olive" into Speed-Flex Hose, the stainless protective braid must be separated from the teflon liner. This can be more difficult than it sounds. Earl's braid spreader solves the problem—and eliminates the tiresome probability of poking holes in your fingers. In use the tool is simply inserted into the cut end of the hose and pushed—spreading the braid. The olive is then placed on the tool mandrel, pushed over the hose liner and under the braid until the liner bottoms against the shoulder of the olive.

The tool mandrel is double ended—one for -3 hose and one for -4. The handle contains a recess for storage of spare olives.



PART NO.	SIZE
007ERL	-3 and -4 Hose



WRENCHING & CUTTING TOOLS

COMPONENTS AND ACCESSORIES

HOSE END WRENCHES

THESE WRENCHES ARE specifically designed for use with Earl's fittings and hose ends. The short handles allow usage in cramped areas and discourages over-tightening. Color coded for quick size identification. Reduces damage to aluminum.

PART NO.	HEX SIZE	NUT SIZE	COLOR
230406ERL	11/16	6 Nut	Black
230408ERL	7/8	8 Nut	Blue
230410ERL	1"	10 Nut	Purple
230412ERL	1-1/4	12 Nut	Red
230416ERL	1-1/2	16 Nut	Bronze
230420ERL	1-13/16	20 Nut	Gold
230402ERL	Set of all six		



DOUBLE-ENDED HOSE END WRENCHES

DOUBLE-ENDED wrenches make it easier than ever to assemble Earl's hose and hose ends correctly without damaging ends. Finished in anodized color coded aluminum. Pick up a complete set for your tool box today.

PART NO.	HEX SIZE	FITS	COLOR
230405ERL	9/16x1/2	4 nut - 3 nut	Natural
230407ERL	11/16x5/8	6 nut - 4 socket	Black
230409ERL	7/8x3/4	8 nut - 6 socket	Blue
230411ERL	1x7/8	10 nut - 8 socket	Purple
230413ERL	1-1/4x1-1/16	12 nut - 10 socket	Red
230415ERL	1-1/2x1-3/16	16 nut - 12 socket	Bronze
230419ERL	2"x1-7/16	20 nut - 16 socket	Gold
230401ERL	Set of all seven		



ULTRA-FLEX™ HAND HELD HOSE CUTTER

Stop wasting time and material with jagged or angled cuts on your hose assemblies. This hose cutter puts precision accuracy in the palm of your hand. The special v-block ensures a straight clean cut every time. This hand held cutter will cut Earl's Super Stock™, Pro-Lite 350™ and even our new Ultra-Flex 650™ Kevlar hose. This tool weighs only 12 oz. and the best part is that the blade is dual functioning. When one edge becomes dull simply rotate the blade and you have a fresh blade ready for hundreds of cuts.

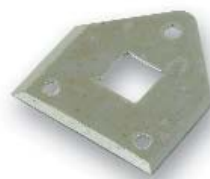
D022ERL



ULTRA-FLEX™ REPLACEMENT HOSE CUTTER BLADE

Earl's also carries a 5 blade (10 with rotation) replacement set.

D023ERL



NEW!

ULTRA-FLEX™ CRIMPING ACCESSORIES

Earl's offers a full line of crimping accessories and an exclusively built mobile crimper for assembling all of our Ultra-Flex 650™ hose and Ultra-Flex™ hose ends. A complete set of dies covering all sizes -4 through -16, die rings, optional air over oil pump for direct air source, and a custom mounting plate are available. The perfect lasting investment for all of your Ultra-Flex assembly needs.

- Crimper has a cast aluminum body that weighs only 42 lbs!
- Manual pump (provided) or optional air over oil pump for direct air source.
- Full cycle time of 20 seconds to 3 minutes depending on what hose end or size of the hose is used.
- 10,000 PSI crimp force on the collar.
- Completely mobile.
- All parts designed exclusively for Earl's for the Ultra-Flex line.



D032ERL
Ultra-Flex crimping machine



D03201ERL
D032 Crimper
Die Ring

D032_ERL
Ultra-Flex
die set



PART #	DESCRIPTION
D032ERL	Ultra-Flex crimping machine
D03200ERL	D032 Mounting Plate
D03201ERL	D032 Crimper Die Ring
D03202ERL	D032 Air over Oil Pump
D03204ERL	-4 Ultra-Flex die set
D03206ERL	-6 Ultra-Flex die set
D03208ERL	-8 Ultra-Flex die set
D03210ERL	-10 Ultra-Flex die set
D03212ERL	-12 Ultra-Flex die set
D03216ERL	-16 Ultra-Flex die set

ULTRA-FLEX HOSE & HOSE ENDS PGS. 5-8
Crimping Instructions on pg. 118,119



D03202ERL
D032 Air over Oil Pump



D03200ERL
D032 Mounting Plate

AUTO-CRIMP TOOLS & DIES

CRIMPING TOOL

Crimping tool and dies are used to crimp the aluminum collar on Auto Crimp hose ends. Designed to give a maximum pressure rating to Auto-Crimp hose ends when using Pro-Lite 350™ hose.

**LEVER TYPE
CRIMPING
MACHINE
PART NO.**

D031ERL



PART NO.
D031_ERL

CRIMPING DIES

The crimping tool is sold without dies. You will need to order the correct die for each size Auto-Crimp™ hose ends. These dies will only work with Auto-Crimp hose ends. Dies are also available for Super Stock™ hose and hose ends.

AUTO-CRIMP CRIMPING DIES PART NO.	SIZE
D03104ERL	4
D03106ERL	6
D03108ERL	8
D03110ERL	10
D03112ERL	12
D03116ERL	16

SUPER-STOCK CRIMPING DIES PART NO.	SIZE
D03145ERL	1/4"
D03167ERL	3/8"
D03109ERL	1/2"
D03111ERL	5/8"
D03113ERL	3/4"

COMPONENTS AND ACCESSORIES

EARL'S ALUMINUM VISE JAWS FOR HOSE ASSEMBLY

THESE HANDY vise jaw liners help prevent scratching of anodized aluminum hose ends during assembly. Internal magnets hold the extruded aluminum liners securely to most popular bench vises. The jaws are available in both of the standard jaw widths and are designed to hold almost any soft part without marking its surface.

PART NO.	DESCRIPTION
004ERL	Aluminum Vise Jaws 3" Wide
005ERL	Aluminum Vise Jaws 5" Wide



AUTO-CRIMP INSTALLATION WHEEL

ORIGINALLY intended for OEM and Speed Shop accounts, this simple tool allows field assembly of AUTO-CRIMP hose ends with Earl's anodized aluminum crimping sleeves. The result is an economical and extremely lightweight permanent assembly. Crimping Wheel fits Imperial-Eastman TC 1000 tube cutter (not included).

019ERL



TUBE-MATE GROOVING WHEEL

IN ORDER to use Earl's TUBE-MATE hose end, the rigid tubing to which the hose end attaches must be either grooved or beaded. Our grooving tool is available as a wheel to fit Imperial-Eastman TC 1000 (not included).

006ERL



EARL'S EZ-BEADER™ TUBING BEADER

Patent NO. 5,186,033

EARL'S patented EZ (ROLLER) BEADER is a fresh approach to an old problem. In order to securely attach rubber water hose to rigid aluminum tubing, the end of the tubing must be beaded. Compact enough to be used on already installed tubing, Earl's EZ-BEADER produces a properly positioned and perfectly radiused bead on aluminum tubing with wall thicknesses from .035" to .065". This is one tool that no serious racing mechanic can afford to be without.



PART NO.	TUBE O.D.
008ERL	3/8"
009ERL	1/2"
010ERL	5/8"
011ERL	3/4"
012ERL	1"
013ERL	1-1/4"
014ERL	1-1/2"
015ERL	1-3/4"
016ERL	2"
018ERL	Set of all 9

PRESSURE TEST KITS

EVERY HOSE assembly should be pressure tested prior to installation. Earl's PRESSURE TEST KIT makes it easy to test field-assembled kits with either compressed air or nitrogen. Consists of fitting with air valve in each size and matching plugs.

Covers sizes 3 through 16.

D016ERL



ASSEMBLY LUBE

184004ERL

EARL'S ASSEMBLY LUBE is specifically mil-spec formulated to ease the installation of hose ends onto synthetic rubber hose. Comes in 8 oz. squeeze bottle.



EARL'S PIPE SEALANT

D024ERL

Earl's instant pipe sealant secures metal pipes and fittings by filling the space between threaded metal parts. Thread sealants prevent leakage caused by tape shredding, vibration loosening, solvent evaporation and damaged threads. Pipe sealant can be used for both low and high pressure applications and seals to the burst strength of most piping systems. Because of the lubricating properties, fitting assembly is easy. It works on any liquid, gas, fuel, air, oil lines and has an anti-galling compound to work with stainless and aluminum fittings. Parts can be disassembled with basic hand tools. Comes in a 50ML tube.

Operating Temperature: -65° F to +400° F

Full Cure Time: 24 Hours @ 68° F

Pressure Resistance: 10,000 PSI

NEW!



EARL'S COPPER-GRAPHITE ANTI-SEIZE

D025ERL

This versatile product is a general purpose copper paste that lubricates, resists seizing and galling and helps defend against galvanic attack. This product also prevents excessive wear and corrosion. Earl's copper-graphite anti-seize can be used on softer metals such as copper and brass, including plastics and non-metallic gaskets. It also allows studs, bolts flanges and gaskets to be removed more easily. Comes in a 4 Oz. can with an attached brush in the lid.

NEW!



EARL'S NICKEL-GRAPHITE ANTI-SEIZE

D026ERL

Earl's nickel-graphite anti-seize is a high temperature resistant anti-seize paste that lubricates during assembly, providing protection against seizing, galling and excessive wear even in the most adverse conditions. This versatile lubrication can be used in automotive, marine and aircraft applications. Nickel is a hard metal that keeps surfaces apart so this product is particularly well suited for applications that involve the use of different metals such as brass to steel. Comes in a 4 oz. can with brush attached in the lid.

NEW!



COMPONENTS AND ACCESSORIES

PUSH-IN VALVE COVER BREATHER*

Push-In Valve Cover Breather—Machined from 6061-T6 Billet aluminum, these breathers feature a unique dual baffle design to virtually eliminate oil blowing out breather. Replaces existing push-in breathers.

Not legal for sale or use in California on pollution controlled motor vehicles.



3434112ERL

PCV BREATHER

PCV Breather—Machined from 6061-T6 Billet aluminum, the PCV Breather matches Earl's breather in appearance. The difference is the PCV Valve hidden inside. These breathers are available with either 3/8" slip-on hose connection or -6 AN hose end. Now you can eliminate that unsightly PCV valve.

Billet aluminum with Blue anodized fitting



Breathers come complete with a rubber grommet to permit installation of Earl's push-in breather on valve covers using either push-in or twist-in breathers. Breathers require minimum hole diameter of 1.22".

PART NO.	QTY. PER PKG.	FINISH	DESCRIPTION
3434110ERL	1	Mill	PCV Breather AN -6
3434114ERL	1	Mill	PCV Breather Slip-On 3/8"
3434116ERL	1 Pair*	Mill	PCV Breather AN -6
3434118ERL	1 Pair**	Mill	PCV Breather Slip-On 3/8"

* Includes 1 Each #3434112 & 3434110
 ** Includes 1 Each #3434112 & 3434114



3434114ERL



3434110ERL

WATER NECKS

These filler necks are CNC machined and are ready for welding. They come with a 1/4" barb overflow fitting attached



PART NO. OPENING

166014ERL 32mm



166015ERL 1.5"

PROTECTIVE HOSE COVERING

COMPONENTS AND ACCESSORIES

FLAME GUARD INSULATION

IT IS OFTEN necessary to insulate hoses (or cables) from extreme heat sources. Earl's non-asbestos flame guard is a very efficient insulating sleeve for hose assemblies. **Color:** Brick Red

PART NO BULK	I.D.	PERFORM-O-FLEX, PRO-LITE & AUTO-FLEX	SPEED FLEX SMOOTH BORE	SUPER STOCK
730006ERL	3/8	-	-3 & -4	-
730008ERL	1/2	-3,-4,& -5	-6	-4
730010ERL	3/4	-6,-7,-8, & -9	-8	-6 & -8
730012ERL	1	-10,-11, & -12	-	-10
730014ERL	1 1/4	-14 & -16	-	-12
730016ERL	1 1/2	-18 & -20	-	-



**OPERATING
TEMPERATURE**
-65° F TO +500° F
W/ SPLASHES TO
2000° F

FLAME GUARD INSULATION - Full cut lengths

PART NO BULK	1FT./0.3M	3FT./0.9M	6FT./1.8M	10FT./3.0M
730006ERL	730106ERL	730306ERL	730606ERL	731006ERL
730008ERL	730108ERL	730308ERL	730608ERL	731008ERL
730010ERL	730110ERL	730310ERL	730610ERL	731010ERL
730012ERL	730112ERL	730312ERL	730612ERL	731012ERL
730014ERL	730114ERL	730314ERL	730614ERL	731014ERL
730016ERL	730116ERL	730316ERL	730616ERL	731016ERL

FLAME GUARD TAPE

Available in 1" width on a 12 foot roll.

Color: Brick Red



731001ERL

**OPERATING
TEMPERATURE**
-65° F TO +500° F
W/ SPLASHES TO
2000° F

STAINLESS TUBE-BRAID™ PROTECTIVE COVERING

Earl's Tube-Braid™ is the least expensive way to finish off any custom engine modification. Stainless Tube-Braid™ is actually stainless steel that slips over existing hoses, and gives the look of the expensive line. Stainless Tube-Braid™ works ideally with Econ-O-Fit hose ends for the finished appearance of professional plumbing. They are also excellent for covering individual wires and cables and for containment of wire bundles.

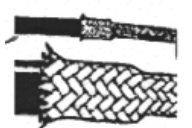
I.D. RANGE	BULK PART NO.
1/4" to 3/8"	920010ERL
3/8" to 5/8"	920013ERL
3/4" to 1"	920001ERL
1" to 1-3/4"	920007ERL
1-1/4" to 2"	920008ERL
1-1/2" to 3"	920004ERL



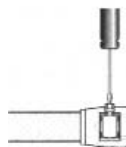
IMPORTANT NOTE 1: Whenever using Tube-Braid™ we suggest most strongly that as it makes visual inspection of the hose underneath impossible, you will need to apply it to a NEW original equipment hose to ensure as long and trouble-free hose life as possible.

IMPORTANT NOTE 2: Each size of Tube-Braid™ sleeve covers a range of hose diameters. If your hose diameter is near the top of the Tube-Braid™ size range, you are likely to need MORE length of sleeve than the actual length of the hose you are intending to cover. So make allowances when ordering!

TUBE BRAID™ HOSE COVER - STAINLESS TUBE BRAID

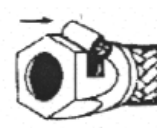


1. Tape end first to avoid fraying
2. Cut with fine tooth blade or shear
3. Slide Tube-Braid onto hose and clamp one end using Econ-O-Fit™ hose end
4. Work Tube-Braid along hose and stretch to fit snugly



5. Install Econ-O-Fit™ hose end on other end of hose and secure tightly

ECON-O-FIT™ HOSE ENDS



1. Slide Econ-O-Fit™ over hose
2. Slide assembly over nipple
3. Tighten onto fitting

INNER SPRING, SAFETY WIRE & CAPS/PLUGS

COMPONENTS AND ACCESSORIES

ALUMINUM TUBING

ANNEALED ALUMINUM TUBING is easily hand-formed to virtually any requirement. The tubing can be used with Earl's TUBE-MATE AUTO-FIT hose ends, it can be flared and used with Earl's 5818 tube nut and 5819 tube sleeve or an adapter can be welded onto the end(s) of the tube, or the ends can be beaded and used with Earl's ECON-O-FIT hose ends or with standard hose clamps. For clamping hose, tubing should be beaded.



PART NO.	O.D.	LENGTH	FINISH
100031ERL	1/4	10' (3m)	Unanodized
100034ERL	3/8	10' (3m)	Unanodized
100037ERL	1/2	10' (3m)	Unanodized

INNER SUPPORT SPRING

IS USED WITH Pro-Lite 350™ hose. A Support Spring is recommended for suction applications or when very tight bends must be made.

Pro-Lite 350™ hose pg. 2

HOSE NO.	4' LENGTH
6	773406ERL
8	773408ERL
10	773410ERL
12	773412ERL
16	773416ERL



SAFETY WIRE

Earl's safety wire is packaged in a convenient one-pound dispenser. The wire pulls and uncoils from the inside with no tangles. The wire is constructed of Mil-Spec 20995 TYPE 302 Stainless Steel wire.

PART NO.	WIRE (DIA.)	FOOTAGE(APPROX.)
D002ERL	.025	600 ft
D003ERL	.032	350 ft
D004ERL	.041	225 ft



CAPS & PLUGS



Earl's plastic caps and plugs are great for plugging fittings when hoses are disconnected and for keeping debris from entering hoses when they are being stored.

CAP PART NO.	DESCRIPTION	PLUG PART NO.	QTY. DESCRIPTION	QTY. PER PKG.
179103ERL	Plastic Caps -3	179203ERL	Plastic Plugs -3	25
179104ERL	Plastic Caps -4	179204ERL	Plastic Plugs -4	25
179106ERL	Plastic Caps -6	179206ERL	Plastic Plugs -6	25
179108ERL	Plastic Caps -8	179208ERL	Plastic Plugs -8	15
179110ERL	Plastic Caps -10	179210ERL	Plastic Plugs -10	15
179112ERL	Plastic Caps -12	179212ERL	Plastic Plugs -12	10
179116ERL	Plastic Caps -16	179216ERL	Plastic Plugs -16	10